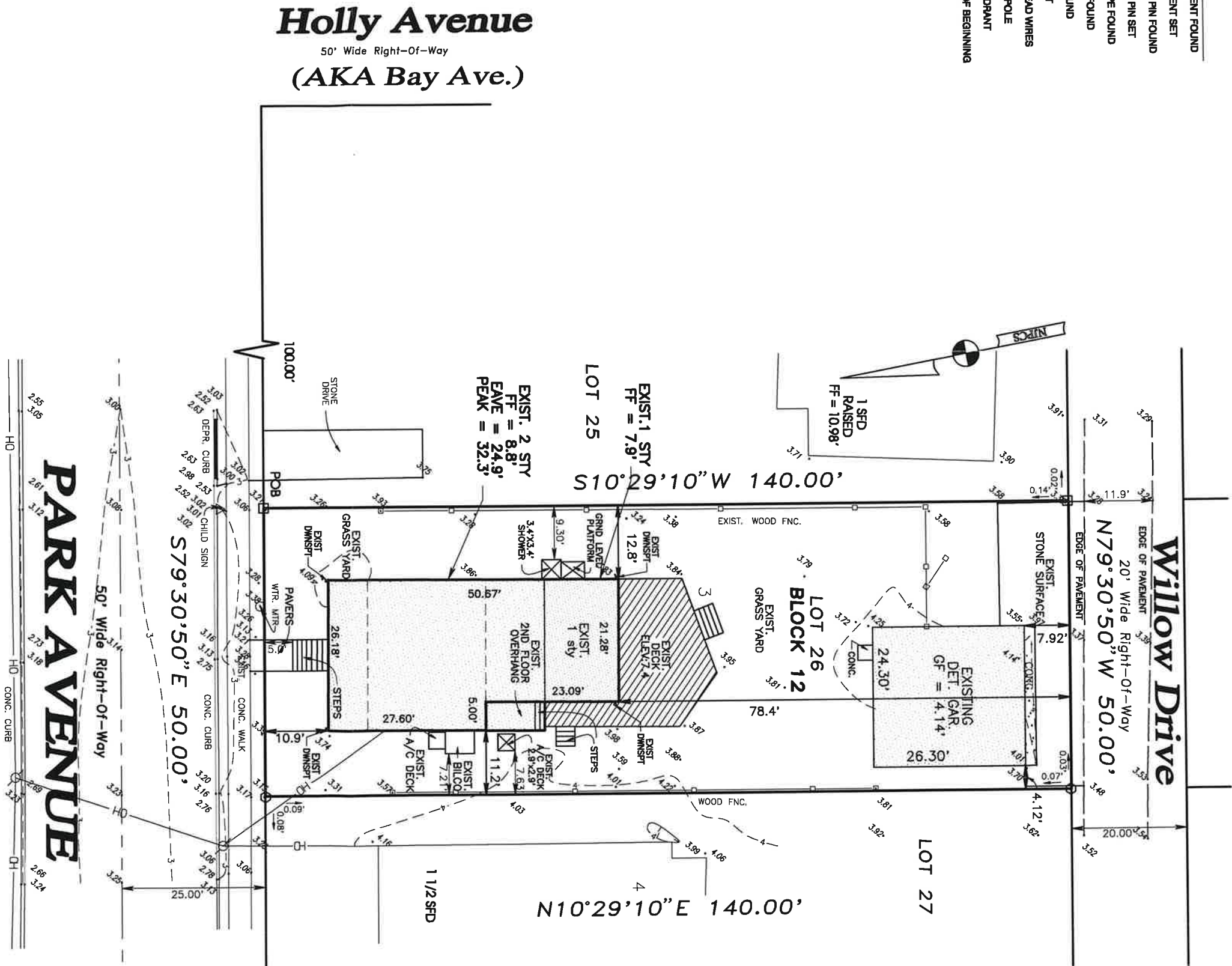


- LEGEND**
- = MONUMENT FOUND
 - = MONUMENT SET
 - = CARPED PIN FOUND
 - = CARPED PIN SET
 - = IRON PIPE FOUND
 - ✱ = STONE FOUND
 - ✕ = NAIL FOUND
 - ✕ = NAIL SET
 - = OVERHEAD WIRES
 - = UTILITY POLE
 - ⊕ = FIRE HYDRANT
 - ⊕ = POINT OF BEGINNING



PREPARED FOR:
ERIC SHEFFIELD

DEED DESCRIPTION:
BEING KNOWN AND DESIGNATED AS LOT 3 IN BLOCK 11 IN SECTION B AS SHOWN ON A CERTAIN MAP ENTITLED "MAP OF BAY HEAD, OCEAN COUNTY, N.J." FILED IN THE OCEAN COUNTY CLERKS OFFICE ON NOVEMBER 11, 1883 AS MAP NO. A-105.

- NOTES:**
- 1.) OFFSETS TO DWELLINGS, SHEDS AND BUILDINGS ARE TO EDGE OF SIDING, BRICK OR STONE.
 - 2.) OFFSETS TO FENCES ARE AS FOLLOWS:
CHAINLINK - CENTER OF END/CORNER POST
WROUGHT ALUMINUM - CENTER OF END/CORNER POST
POST AND RAIL FENCE - CENTER OF END/CORNER POST
PICKET FENCE - EDGE OF BOARD (FINISHED SIDE)
WOOD STOCKADE FENCE - EDGE OF BOARD (FINISHED SIDE)
VINYL STOCKADE FENCE - CENTER OF END/CORNER POST

01/14/2022: VERIFIED HOUSE DIMENSIONS

SURVEY MAP W/ TOPOGRAPHY

BLOCK 12 LOT 26

BOROUGH OF BAY HEAD, OCEAN COUNTY, NEW JERSEY

JOB No.: 2021-0554	TAX MAP SHEET No.: 1
DRAWN BY: DR	DEED BOOK / PAGE: 16685/1989
CHECKED BY: JFP2	UNITS: USFT
SCALE: 1"=20'	VERTICAL DATUM: NAVD 1988
CONDITIONS AS OF: 12/16/2021	HORIZONTAL DATUM: NAD 1983

Jay F. Pierson
JAY F. PIERSON, L.S., P.P.
NEW JERSEY PROFESSIONAL LAND SURVEYOR 02525

East Coast Engineering, Inc.

ENGINEERING LAND SURVEYING PLANNING GPS

(732) 244-3090 VOICE 508 MAIN STREET
(609) 683-2800 VOICE TOMS RIVER, NJ 08753
(732) 244-3044 FAX www.eceinc.net

JAY F. PIERSON, P.L.S. PR
ROBERT J. HARRINGTON, PE
JASON M. MARGIANO, PE PR
JOSEPH L. LIZOK, PLS