

**BOROUGH OF BAY HEAD  
OCEAN COUNTY , NEW JERSEY**

**NJDEPE SEWAGE INFRASTRUCTURE IMPROVEMENT ACT**

**JANUARY 1994**

**PHASE II**

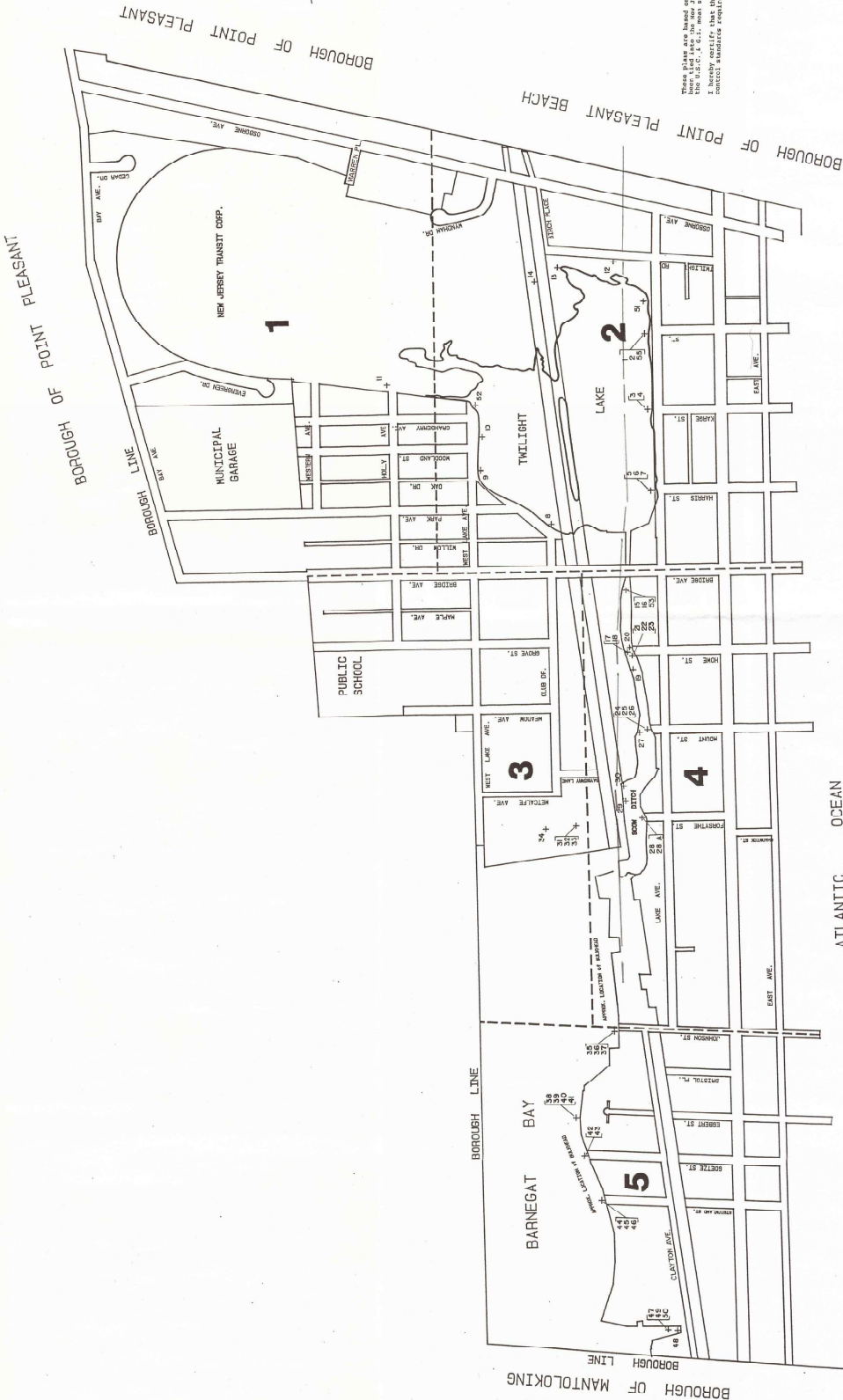
**STORM-SEWER MAPPING**

**GRANT I.D. 29006**

**MAYOR:  
EDWARD JOHNSON  
COUNCIL PRESIDENT:  
MICHAEL HURLEY  
COUNCIL MEMBERS:  
THOMAS APPLGATE  
JOHN BERKO  
AMBROSE HARDWICK  
MICHAEL HURLEY  
RICHARD LABONTE  
AURTHUR PETRACCO**

**John S. Truhan Consulting Engineers, Inc.**

*A Professional Corporation*  
1449 Lakeswood Road  
Wall, New Jersey  
Mailing Address: P.O. Box K  
Manasquan, New Jersey 08736



These plans are based on the Borough of Bay Head Sea Map, which has been filed with the State of New Jersey Department of Transportation and the State of New Jersey Department of Environmental Protection. I hereby certify that this map meets the technical and professional control standards required for these plans.

*John S. Truhan*  
 LICENSE NO. 15,887  
 REGISTERED PROFESSIONAL ENGINEER

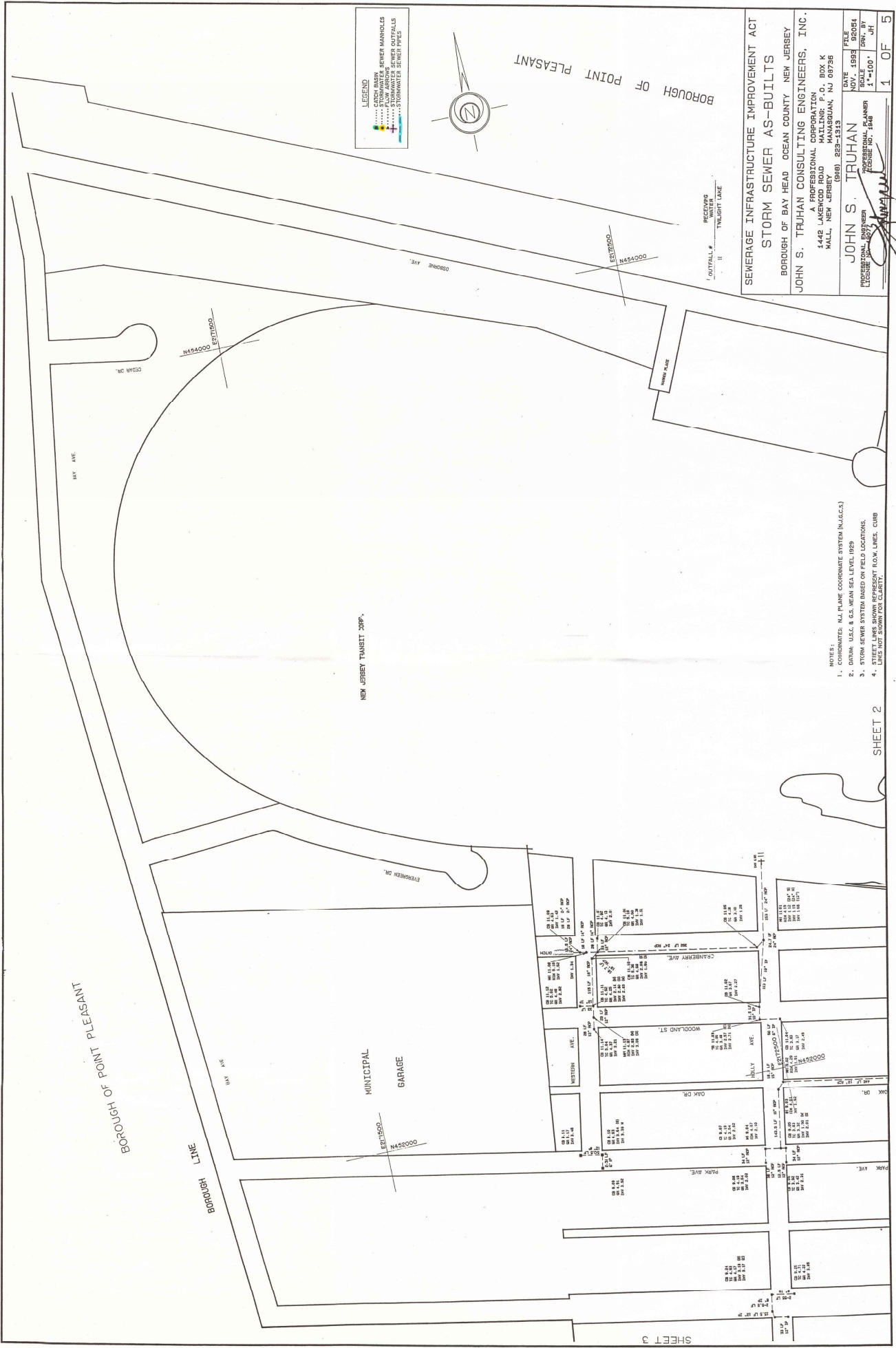
SEWERAGE INFRASTRUCTURE IMPROVEMENT ACT  
 INDEX SHEET

BOROUGH OF BAY HEAD OCEAN COUNTY NEW JERSEY  
 JOHN S. TRUHAN CONSULTING ENGINEERS, INC.  
 A PROFESSIONAL CORPORATION  
 4448 LAKEVIEW ROAD  
 WALL, NEW JERSEY 08088-2014  
 (609) 225-1313

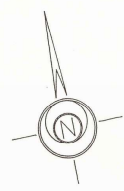
FILE NO. 15887  
 DATE 1/28/88  
 SCALE 1" = 300'  
 SHEET NO. 1 OF 1  
 INDEX

LEGEND  
 4-2 - OUTFALL  
 1 - SHEET #

MAP FILE # 78-004.010



**LEGEND**  
 ● STORMWATER SEWER MANHOLE  
 ○ STORMWATER SEWER OUTFALL  
 --- STORMWATER SEWER PIPE



BOROUGH OF POINT PLEASANT

**SEWERAGE INFRASTRUCTURE IMPROVEMENT ACT**  
**STORM SEWER AS-BUILTS**  
 BOROUGH OF BAY HEAD OCEAN COUNTY NEW JERSEY  
 JOHN S. TRUHAN CONSULTING ENGINEERS, INC.  
 A PROFESSIONAL CORPORATION  
 1442 LAKEWOOD ROAD HALLING: P.O. BOX K  
 MANASSAQUAN, NJ 08736  
 (609) 823-1933

DATE: NOV. 1983  
 FILE: 90054  
 SCALE: 1"=100'  
 DRAWN BY: JHT  
 CHECKED BY: JHT

JOHN S. TRUHAN  
 PROFESSIONAL ENGINEER  
 LICENSE NO. 184

1 OF 5

- NOTES:**
1. COORDINATES, N.A. PLANE COORDINATE SYSTEM (N.A.G.C.S.)
  2. DATUM: U.S.C. & G.S. MEAN SEA LEVEL 1929
  3. STORM SEWER SYSTEM BASED ON FIELD LOCATIONS.
  4. STREET LINES SHOWN REPRESENT F.O.W. LINES. CURB LOCATIONS SHOWN FOR LEGACY.

SHEET 2

MAP FILE # 78-005.008

SHEET 3



- NOTES:
1. COORDINATES: N.A. PLANE COORDINATE SYSTEM (NAD83)
  2. DTDIM: U.S.C. & G.S. MEAN SEA LEVEL 1989
  3. STORM SEWER SYSTEM BASED ON FIELD LOCATIONS.
  4. LINES NOT SHOWN FOR CLARITY.



OUTFALL #	RECEIVING	OWNER
1	TWILIGHT LAKE	STATE OF NEW JERSEY
2	TWILIGHT LAKE	STATE OF NEW JERSEY
3	TWILIGHT LAKE	STATE OF NEW JERSEY
4	TWILIGHT LAKE	BOROUGH OF BAYHEAD
5	TWILIGHT LAKE	BOROUGH OF BAYHEAD
6	TWILIGHT LAKE	BOROUGH OF BAYHEAD
7	TWILIGHT LAKE	BOROUGH OF BAYHEAD
8	TWILIGHT LAKE	BOROUGH OF BAYHEAD
9	TWILIGHT LAKE	BOROUGH OF BAYHEAD
10	TWILIGHT LAKE	BOROUGH OF BAYHEAD
11	TWILIGHT LAKE	BOROUGH OF BAYHEAD
12	TWILIGHT LAKE	BOROUGH OF BAYHEAD
13	TWILIGHT LAKE	BOROUGH OF BAYHEAD
14	TWILIGHT LAKE	BOROUGH OF BAYHEAD
15	TWILIGHT LAKE	BOROUGH OF BAYHEAD
16	TWILIGHT LAKE	BOROUGH OF BAYHEAD
17	TWILIGHT LAKE	BOROUGH OF BAYHEAD
18	TWILIGHT LAKE	BOROUGH OF BAYHEAD
19	TWILIGHT LAKE	BOROUGH OF BAYHEAD
20	TWILIGHT LAKE	BOROUGH OF BAYHEAD
21	TWILIGHT LAKE	BOROUGH OF BAYHEAD
22	TWILIGHT LAKE	BOROUGH OF BAYHEAD
23	TWILIGHT LAKE	BOROUGH OF BAYHEAD
24	TWILIGHT LAKE	BOROUGH OF BAYHEAD
25	TWILIGHT LAKE	BOROUGH OF BAYHEAD

SEWERAGE INFRASTRUCTURE IMPROVEMENT ACT  
 STORM SEWER AS-BUILTS  
 BOROUGH OF BAY HEAD OCEAN COUNTY NEW JERSEY  
 JOHN S. TRUHAN CONSULTING ENGINEERS, INC.  
 A PROFESSIONAL CORPORATION  
 1442 LAKEWOOD ROAD MAILING: P.O. BOX K  
 HILLSIDE, NEW JERSEY 07036

DATE: NOV. 1993  
 FILE NO.: 93014  
 DRAWN BY: JST  
 CHECKED BY: JST  
 PROJECT NO.: 93014  
 SHEET NO.: 2 OF 5

MAP FILE # 78-005.007

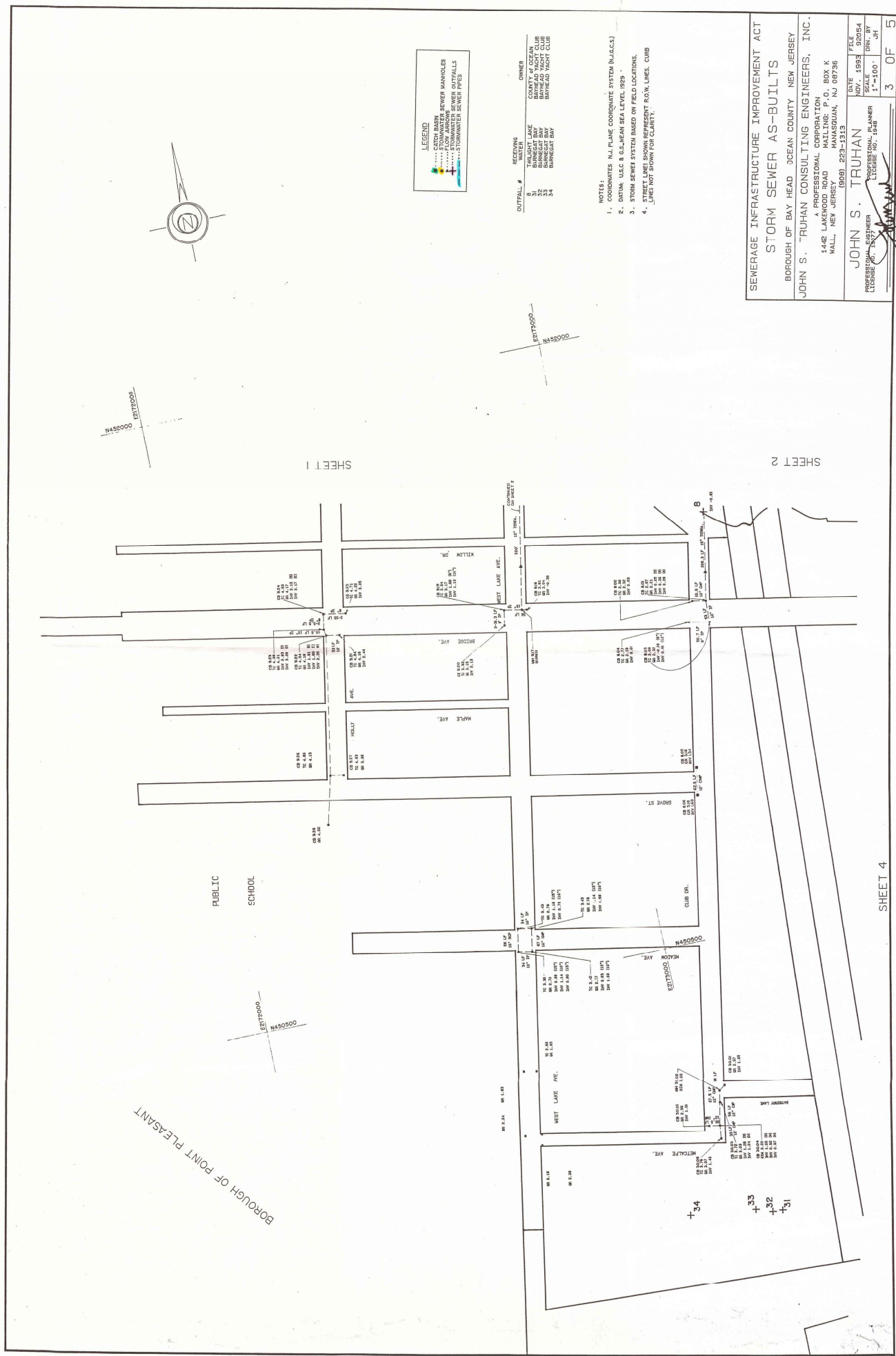


SHEET 1

SHEET 3

SHEET 4

ATLANTIC OCEAN



**LEGEND**  
 ..... CATCH BASIN  
 ..... SEWER MANHOLES  
 ..... FLOW ARROWS  
 ..... STORMWATER SEWER PIPES

OUTFALL #	RECEIVING WATER	OWNER
31	BARRINGTON	MANHATTAN YACHT CLUB
32	BARRINGTON	BARRINGTON YACHT CLUB
33	BARRINGTON	BARRINGTON YACHT CLUB
34	BARRINGTON	BARRINGTON YACHT CLUB

- NOTES:**
1. COORDINATES N.J. PLANE COORDINATE SYSTEM (N.J.G.C.S.)
  2. DATUM: U.S.C. 8 G.S. MEAN SEA LEVEL 1929
  3. STORM SEWER SYSTEM BASED ON FIELD LOCATIONS.
  4. STREET LINES SHOWN REPRESENT P.O.M. LINES. CURB LINES NOT SHOWN FOR CLARITY.

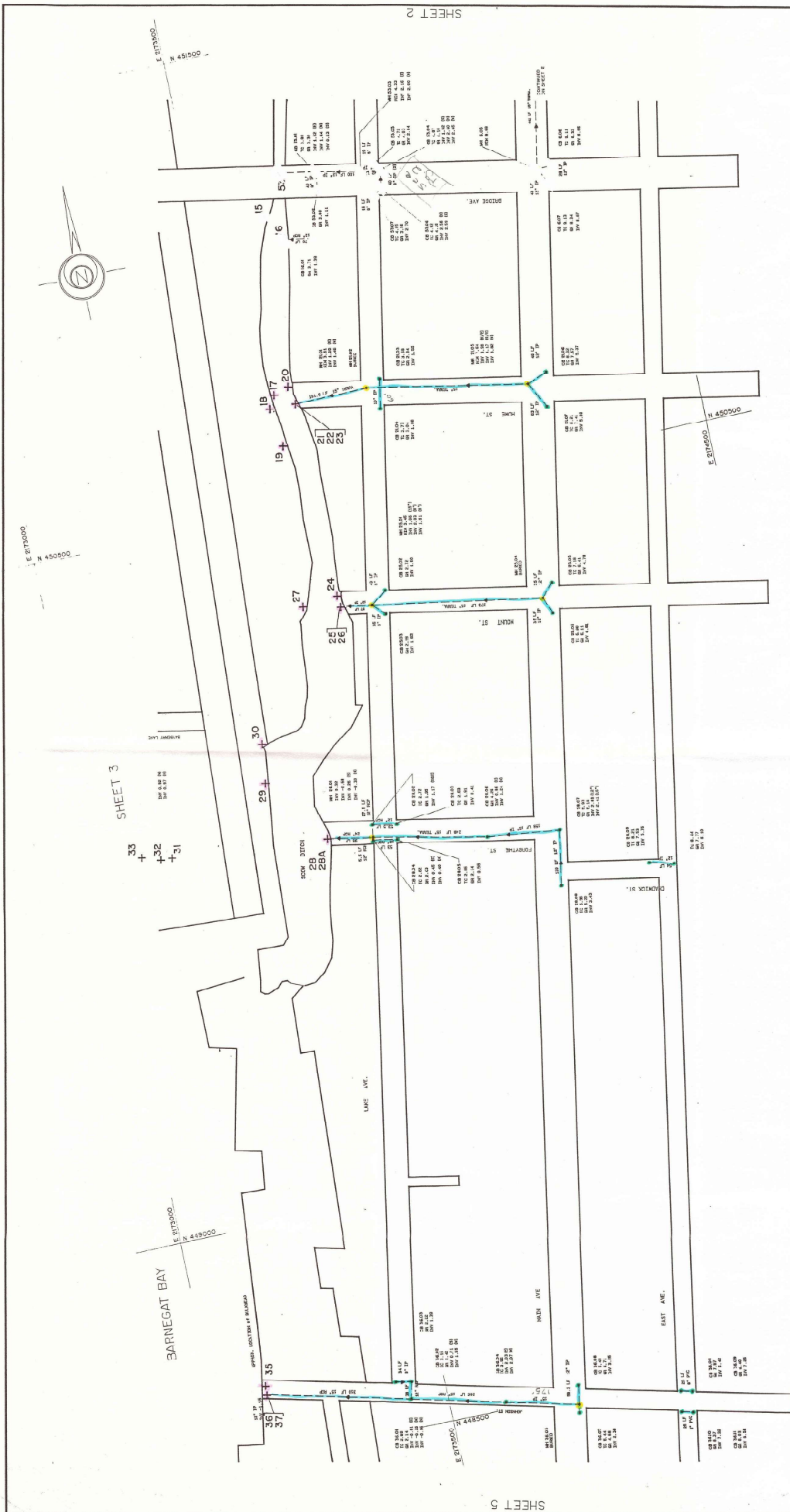
SEWERAGE INFRASTRUCTURE IMPROVEMENT ACT  
 STORM SEWER AS-BUILTS  
 BOROUGH OF BAY HEAD OCEAN COUNTY NEW JERSEY

JOHN S. TRUHAN CONSULTING ENGINEERS, INC.  
 1442 LAKEWOOD BOULEVARD BOX K  
 MALL, NEW JERSEY  
 (908) 223-1313

JOHN S. TRUHAN  
 PROFESSIONAL ENGINEER  
 LICENSE NO. 1348

DATE: 1997  
 SCALE: 1"=100'  
 DRAWN BY: JH  
 3 OF 5

MAP FILE # 78-005.006



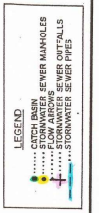
SHEET 3

SHEET 5

SEWERAGE INFRASTRUCTURE IMPROVEMENT ACT  
 STORM SEWER AS-BUILTS  
 BOROUGH OF BAY HEAD OCEAN COUNTY NEW JERSEY  
 JOHN S. TRUHAN CONSULTING ENGINEERS, INC.  
 A PROFESSIONAL CORPORATION  
 1442 LAKEWOOD ROAD  
 WALL, NEW JERSEY 08795  
 (908) 293-1313  
 JOHN S. TRUHAN  
 PROFESSIONAL ENGINEER  
 LICENSE NO. 186E  
 DATE NOV. 1993  
 SCALE 1"=100'  
 FILE NO. 93064  
 DRN. BY JHT  
 4 OF 5

NOTES:  
 1. COORDINATES: N.J. PLANE COORDINATE SYSTEM (N-J.C.S.)  
 2. DATUM: U.S.C. B.G.S. MEAN SEA LEVEL 1929  
 3. STORM SEWER SYSTEM BASED ON TIE LOCATIONS.  
 4. STREET LINES SHOWN REPRESENT ROAD LINES. CURB LINES NOT SHOWN FOR CLARITY.

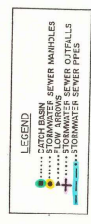
OUTFALL #	RECEIVING	OWNER
15	SCOW DITCH	BOROUGH OF BAY HEAD
16	SCOW DITCH	BOROUGH OF BAY HEAD
17	SCOW DITCH	BOROUGH OF BAY HEAD
18	SCOW DITCH	BOROUGH OF BAY HEAD
19	SCOW DITCH	BOROUGH OF BAY HEAD
20	SCOW DITCH	BOROUGH OF BAY HEAD
21	SCOW DITCH	BOROUGH OF BAY HEAD
22	SCOW DITCH	BOROUGH OF BAY HEAD
23	SCOW DITCH	BOROUGH OF BAY HEAD
24	SCOW DITCH	BOROUGH OF BAY HEAD
25	SCOW DITCH	BOROUGH OF BAY HEAD
26	SCOW DITCH	BOROUGH OF BAY HEAD
27	SCOW DITCH	BOROUGH OF BAY HEAD
28	SCOW DITCH	BOROUGH OF BAY HEAD
29	SCOW DITCH	BOROUGH OF BAY HEAD
30	SCOW DITCH	BOROUGH OF BAY HEAD
31	SCOW DITCH	BOROUGH OF BAY HEAD
32	SCOW DITCH	BOROUGH OF BAY HEAD
33	SCOW DITCH	BOROUGH OF BAY HEAD
34	SCOW DITCH	BOROUGH OF BAY HEAD
35	SCOW DITCH	BOROUGH OF BAY HEAD
36	SCOW DITCH	BOROUGH OF BAY HEAD
37	SCOW DITCH	BOROUGH OF BAY HEAD



MAP FILE # 78-005.005



- NOTES:
1. COORDINATE: N.A. PLANE COORDINATE SYSTEM (N.A.G.C.S.)
  2. DATUM: U.S.C. & G.S. MEAN SEA LEVEL 1929
  3. STORM SEWER SYSTEM BASED ON FIELD LOCATIONS.
  4. STREET LINES SHOWN REPRESENT R.O.V. LINES. CURB LINES NOT SHOWN FOR CLARITY.



OUTFALL #	RECEIVING WATER	OWNER
35	BANNEGAT BAY	BANNEGAT BAY
36	BANNEGAT BAY	BANNEGAT BAY
37	BANNEGAT BAY	BANNEGAT BAY
38	BANNEGAT BAY	BANNEGAT BAY
39	BANNEGAT BAY	BANNEGAT BAY
40	BANNEGAT BAY	BANNEGAT BAY
41	BANNEGAT BAY	BANNEGAT BAY
42	BANNEGAT BAY	BANNEGAT BAY
43	BANNEGAT BAY	BANNEGAT BAY
44	BANNEGAT BAY	BANNEGAT BAY
45	BANNEGAT BAY	BANNEGAT BAY
46	BANNEGAT BAY	BANNEGAT BAY
47	BANNEGAT BAY	BANNEGAT BAY
48	BANNEGAT BAY	BANNEGAT BAY
49	BANNEGAT BAY	BANNEGAT BAY
50	BANNEGAT BAY	BANNEGAT BAY

SHEET 4

SEWERAGE INFRASTRUCTURE IMPROVEMENT ACT  
 STORM SEWER AS-BUILTS  
 BOROUGH OF BAY HEAD OCEAN COUNTY NEW JERSEY  
 JOHN S. TRUHAN CONSULTING ENGINEERS, INC.  
 A PROFESSIONAL CORPORATION  
 1442 LINDEN ROAD  
 MANSFIELD, NJ 08736  
 (908) 223-1913

DATE: 09/27/04  
 SCALE: 1"=100'  
 FILE NO.: 04-004  
 DRAWN BY: JH  
 CHECKED BY: JH

JOHN S. TRUHAN  
 PROFESSIONAL ENGINEER  
 LICENSE NO. 1-1548

5 OF 5

MAP FILE # 78-005.004